

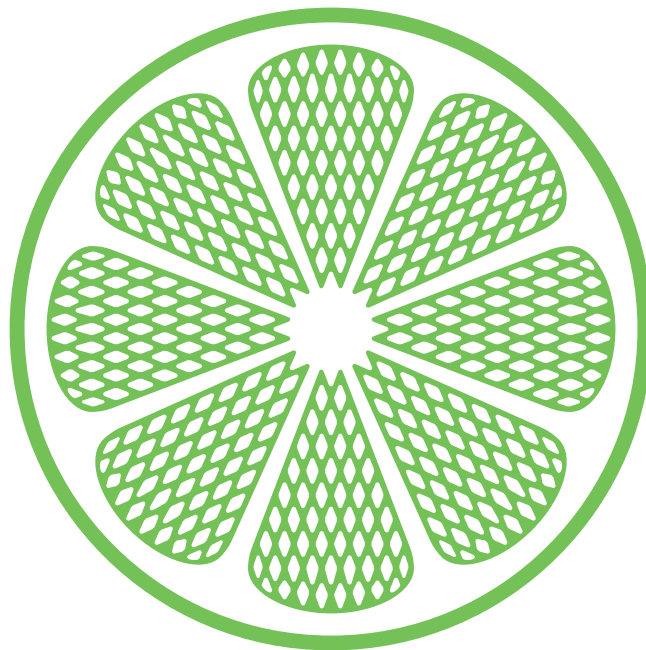
Vacuum Cleaners



IPC

IPC Integrated Professional Cleaning

IPC Integrated Professional Cleaning





IPC - Integrated Professional Cleaning - was formed in 2005 following the merger of a number of **leading companies** in the professional cleaning sector, each specialising in a different market segment.

A complex Group able to provide integrated global cleaning products.

Its size and international presence make IPC one of the world's leading groups manufacturing professional machines and equipment, with a broad portfolio of prestigious products and brands each with a different target customer and a constant commitment to research and innovation.

IPC places **customer satisfaction** at the centre of its activities, offering its services as the **ideal partner** for all cleaning sector operators.

Research, innovation, product quality and a high standard of service and efficiency are the **fundamental elements in the Group's corporate culture**. Business spirit, a sense of belonging and reference to established best practices are universal values, a common asset centred on the **value of the individual**, the true point of reference for the entire corporate system.

The Group's logo, a section of a technological lime, represents the natural link with the idea of cleanliness and a reference to the **constant drive towards research and innovation**. It visually and symbolically identifies IPC characteristic values of a sense of belonging, strength and innovation.

IPC: a universe of "Easy Innovation".

Credits and contacts

IP Cleaning S.p.A.

Tel.

+39 0421 205511 (r.a.)

Fax

+39 0421 204277

E-mail

info@ipcleaning.com

Address

IP Cleaning S.p.A
Viale Treviso 63
30026 Summaga di Portogruaro (VE)
ITALY

Web

www.ipcleaning.com

Manufacturing and commercial premises

IPC Soteco

Tel.

+39 0372 424611
+39 0372 429398 (Exp)
+39 0372 429392 (Ita)

Fax

+39 0372 429398

E-mail

exp@soteco.com (Exp)
ita@soteco.com (Ita)

Address

IPC Soteco
Via E. Fermi 2
26022 Castelverde (CR)
ITALY

Web

www.ipcsoteco.com



IPC Vacuum Cleaners

page 5



Vacuum cleaners and extractors Premium line

page 10



Vacuum cleaners Professional line

page 34



Vacuum cleaners for special applications

page 42

Reading guide to IPC vacuum cleaners nomenclature

IPC vacuum cleaners nomenclature allows an easy and fast identification of the main technical characteristics of each model.
Following an example on VA 1 WD 1 41 S vacuum cleaner:

Vacuum cleaner	WD = Wet/Dry D = Dry	Tank capacity	Tank material S = Steel tank P = Plastic tank
1 = Premium Range 2 = Professional Range		No. of suction motors 1 = 1 motore 2 = 2 motori 3 = 3 motori	

Vacuum Cleaners IPC

The new range for the professional sector

IPC presents a new range of professional vacuum cleaners in order to cover always more areas of applications.

The new range of vacuum cleaners is divided into three lines: "Premium", with stainless steel and plastic tank to satisfy the most demanding expert users for most intensive applications; "Professional" with plastic tank to assure reliability, great manoeuvrability; vacuum cleaners for "Special Applications". All lines ensure top level performance, thanks to the following features which make IPC vacuum cleaners the top of the range in the professional sector:



Sound-absorbent filter. All suction motors are equipped with a sound-absorbent filter to ensure low noise levels.



Head gasket made of special material "cast" in the base, with a special fusion process, guaranteeing maximum resistance and durability, even when vacuuming oily or chemical residues.



EcoMode function. Machines with two and three motor are fitted with special valves allowing the suction motors to be used separately without loss of power. The system greatly reduces electricity consumption as the user can choose how many motors to use.



Head attachment with nylon core, extremely flexible and resistant.



Aluminium and plastic hoses (patented system) for maximum manoeuvrability and lightness for the operator combined with great strength.



Flexible hoses, resist all type of stress and torsion for perfect vacuuming at all times.



Sanifilter. Antibacterial filter to avoid bacterial proliferation.



Screw coupling for attaching the flexible hose to the handgrip, which allows to work in maximum safety, avoiding damage and preventing the hose from becoming detached from the handgrip during cleaning.

Vacuum Cleaners IPC

Vacuum head assembly

The new IPC range of vacuum and carpet cleaners are equipped with high performance on or two-stage suction motors, easy to remove and service. All motors have double insulation, By Pass motors have independent ventilatio.

Head assembly 1



Sound-absorbent filter. All suction motors are fitted with a sound-absorbent filter made from sound absorbent polyurethane sponge to guarantee the lowest possible noise levels.



The head gasket is made of special material "cast" in the base using a special fusion process to guarantee maximum resistance and durability, even when vacuuming oily or chemical residues.



Advantages

- Sound-absorbent filter in special sponge material.
- Gasket fused to the head.
- Components laboratory tested for thousands of hours.

Benefits

- No maintenance required as the materials assure high resistance.
- Guaranteed low noise levels.
- Long lasting components.



Head assembly 2



EcoMode function. Two and three motor appliances are fitted with special valves allowing the suction motors to be used separately without loss of power.



Resistant and highly flexible head coupling.



Advantages

- The stop valves enable the suction motors to be used separately.
- Rapid head attachment with nylon core.
- Components laboratory tested for thousands of hours.

Benefits

- Great energy savings, according to use.
- Guarantees perfect head closure at all times.
- Components with guaranteed long working life.

Vacuum Cleaners IPC

Aluminium-plastic hoses and flexible hose

All the material used to make IPC vacuum cleaners are produced and assembled in-house using pioneering production techniques able to guarantee maximum reliability and durability.

Aluminium and plastic hoses



All IPC vacuum cleaners have aluminium and plastic hoses (patented system).

Flexible hose



The suction flexible hose is made from particularly resistant but malleable plastic.



Screw coupling attaching the hose to the handgrip to work in maximum safety, avoiding damage and preventing the hose from becoming detached from the handgrip during cleaning.



PowerHose



Flex



PowerScrew



Advantages

- As well as being extremely resistant, the aluminium and plastic hoses are also light and manoeuvrable.
- The toughness of the hose allows to work in all conditions.
- Components tested and constructed with high quality materials.
- Screw coupling fastening the hose to the handgrip.

Benefits

- Maximum safety and manoeuvrability during cleaning.
- Maximum productivity guaranteed in all working conditions.
- Components with guaranteed long working life.
- Great advantages for the operator.

Vacuum Cleaners IPC

Sanifilter

Created by a group of scientists for the biomedical industry, the FibroFilter treatment is internationally recognised for its antimicrobial action. The Sanifilter, provided as standard in all IPC vacuum cleaners, prevents the proliferation of bacteria, fungi and micro-parasites in the tank. It is free from volatile organic compounds, colourless and odourless.



Fabric treated with the laboratory tested FibroFilter system.



Paper bag available for disposable use.

Sanifilter treatment

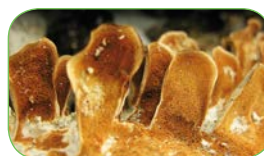
Possibility of inhibiting and eliminating:



Viruses



Bacteria



Fungi: yeasts and moulds



Micro-parasites



Advantages

- Maximum operator safety during operation.
- Guaranteed long life.
- Ease of maintenance.
- Certified system.

Benefits

- Avoids the proliferation of bacteria, fungi and micro-parasites in the tank.
- The filter is designed for a long life.
- Easy to clean and wash.
- Guaranteed effective antibacterial treatment.

Vacuum cleaners and extractors Premium line

The IPC Premium line of wet and dry vacuum cleaners are designed to offer maximum performance in a wide range of applications and for the most demanding users. The high quality construction guarantees great reliability and durability, thanks to the use of high quality materials such as steel or plastic tanks, plastic heads and trolleys which resist damage in the case of impact or particularly heavy use.



WINDLY 202 IPC page14



Sectors	
Automotive	●●●●●●●●
Industry	○●●●●●●●
Cleaning	●●●●●●●●
Agriculture	○●●●●●●●
Building	○●●●●●●●
Daily use	
h 0 8	



WINDLY 215 IPC page 14



Sectors	
Automotive	●●●●●●●●
Industry	○●●●●●●●
Cleaning	●●●●●●●●
Agriculture	○●●●●●●●
Building	○●●●●●●●
Daily use	
h 0 8	



WET/ DRY

WINDLY 515 IPC page 16



Sectors	
Automotive	●●●●●●●●
Industry	○●●●●●●●
Cleaning	●●●●●●●●
Agriculture	○●●●●●●●
Building	○●●●●●●●
Daily use	
h 0 8	



WET/ DRY

WINDLY 515/37 IPC page 16



Sectors	
Automotive	●●●●●●●●
Industry	●●●●●●●●
Cleaning	●●●●●●●●
Agriculture	○●●●●●●●
Building	○●●●●●●●
Daily use	
h 0 8	



WET/ DRY

WINDLY COMPACT 429M IPC page 18



Sectors	
Automotive	●●●●●●●●
Industry	●●●●●●●●
Cleaning	●●●●●●●●
Agriculture	●●●●●●●●
Building	●●●●●●●●
Daily use	
h 0 8	



WET/ DRY

WINDLY 429M IPC page 20



Sectors	
Automotive	●●●●●●●●
Industry	●●●●●●●●
Cleaning	●●●●●●●●
Agriculture	●●●●●●●●
Building	●●●●●●●●
Daily use	
h 0 8	



WET/ DRY

WINDLY 440M IPC page 20



Sectors	
Automotive	●●●●●○○○
Industry	●●●○○○○○
Cleaning	●●●●●●●●
Rental	●●●●●●●●
Building	●●○○○○○○
Daily use	
h 0 8	



WET/ DRY

WINDLY 429M FM IPC page 22



Sectors	
Automotive	●●●●●○○○
Industry	●●●○○○○○
Cleaning	●●●●●●●●
Rental	●●●●●●●●
Building	●●○○○○○○
Daily use	
h 0 8	



WET/ DRY

WINDLY 429M FM INOX IPC page 22



Sectors	
Automotive	●●●●●○○○
Industry	●●●●●●●●
Cleaning	●●●●●●●●
Rental	○○○○○○○○
Building	●●●●●●●●
Daily use	
h 0 8	



WET/ DRY

WINDLY 215S INOX IPC page 24



Sectors	
Automotive	●●●●●○○○
Industry	●●○○○○○○
Cleaning	●●●●●○○○
Rental	●●●●●○○○
Building	○○○○○○○○
Daily use	
h 0 8	



WET/ DRY

WINDLY 515 INOX IPC page 26



Sectors	
Automotive	●●●●●●●●
Industry	●●○○○○○○
Cleaning	●●●●●○○○
Rental	●●●●●○○○
Building	●●●●●○○○
Daily use	
h 0 8	



WET/ DRY

WINDLY 515/41 INOX IPC page 26



Sectors	
Automotive	●●●●●●●●
Industry	●●○○○○○○
Cleaning	●●●●●○○○
Rental	●●●●●○○○
Building	●●●●●○○○
Daily use	
h 0 8	



WET/ DRY



WINDLY 429M INOX IPC page 28



Sectors	
Automotive	● ● ● ● ● ● ● ●
Industry	● ● ● ● ● ● ● ●
Cleaning	● ● ● ● ● ● ● ●
Agriculture	● ● ● ● ● ● ● ●
Building	● ● ● ● ● ● ● ●
Daily use	
h 0 8	



WET/
DRY

WINDLY 440M INOX IPC page 28



Sectors	
Automotive	● ● ● ● ● ● ● ●
Industry	● ● ● ● ● ● ● ●
Cleaning	● ● ● ● ● ● ● ●
Agriculture	● ● ● ● ● ● ● ●
Building	● ● ● ● ● ● ● ●
Daily use	
h 0 8	



WET/
DRY

DELTA 200 IPC page 30



Sectors	
Automotive	● ● ● ● ● ● ● ●
Industry	● ● ● ● ● ● ● ●
Cleaning	● ● ● ● ● ● ● ●
Agriculture	○ ○ ○ ○ ○ ○ ○ ○
Building	○ ○ ○ ○ ○ ○ ○ ○
Daily use	
h 0 8	



EXTRACTOR

DELTA 300 IPC page 30



Sectors	
Automotive	● ● ● ● ● ● ● ●
Industry	● ● ● ● ● ● ● ●
Cleaning	● ● ● ● ● ● ● ●
Agriculture	○ ○ ○ ○ ○ ○ ○ ○
Building	○ ○ ○ ○ ○ ○ ○ ○
Daily use	
h 0 8	



EXTRACTOR

DELTA 700 IPC page 32



Sectors	
Automotive	● ● ● ● ● ● ● ●
Industry	● ● ● ● ● ● ● ●
Cleaning	● ● ● ● ● ● ● ●
Agriculture	○ ○ ○ ○ ○ ○ ○ ○
Building	○ ○ ○ ○ ○ ○ ○ ○
Daily use	
h 0 8	



EXTRACTOR

WINDLY

202 IPC - 215 IPC



WINDLY 202 IPC - Accessories 36 mm diameter kit code 2671
WINDLY 215 IPC - Accessories 36 mm diameter kit code 2675



Flat cleaning head
Code 00617



Narrow brush
Code 00004



Upholstery nozzle
Code 00616



Double use brush
Code 00632



Sanifilter
Code 038833 SAN ▲
- 03292 SAN ■



Head with anti foam system.



Shockproof polypropylene tank, resistant to water and easy to clean.



Completely recyclable high resistance polypropylene plastics.



Handy carrying handle.



Trolley with swivelling wheels for easy manoeuvring.

Technical characteristics

- Suitable for wet and dry vacuuming
- VEGAS 202 IPC equipped with new generation one-stage high speed motor
- VEGAS 215 IPC equipped with new generation one-stage high speed By Pass motor
- Equipped with new generation one-stage high speed motor
- Suitable for all uses
- Trolley for small surfaces
- Can be fitted with disposable paper filter
- Motors with double insulation
- Small dimensions liquid tank



Head with cable hook.

	Model	Applications	Power (W)	Voltage (Volt)	Waterlift (mm/H ₂ O)	Air flow (m ³ /h)	Tank capacity (l)	(LxWxH) (cm)
▲	WINDLY 202 IPC	Dry	1300	220/240	2870	210	17	40x40x45
■	WINDLY 215 IPC	Dry/Wet	1300	220/240	2380	200	17	40x40x45

Power cable length: 8.5 m

Recommended optional accessories



Paper filter
Code 00147



WINDLY

515 IPC - 515/37 IPC



WINDLY 515 IPC - WINDLY 515/37 IPC - Accessories 38 mm diameter kit code 2672



Liquid suction brush
Code 06385



Flat cleaning head
Code 00003



Adapter
Code 06388



Narrow brush
Code 06295



Sanifilter
Code 03292 SAN



Head with anti foam system.



Trolley with large rear wheels for more precise steering.



Recyclable shockproof polypropylene plastic.



Handy carrying handle.



With rear accessories trolley.

Technical characteristics

- Suitable for wet and dry vacuuming
- Equipped with new generation one-stage high speed By Pass motor
- Suitable for all uses
- Trolley for medium surfaces
- Can be fitted with disposable paper filter
- Motors with double insulation
- Liquid tank of medium capacity

	Model	Applications	Power (W)	Voltage (Volt)	Waterlift (mm/H ₂ O)	Air flow (m ³ /h)	Tank capacity (l)	Dimensions (LxWxH) (cm)
▲	WINDLY 515 IPC	Dry/Wet	1300	220/240	2380	200	26	40x40x72
■	WINDLY 515/37 IPC	Dry/Wet	1300	220/240	2380	200	37	40x40x90

Power cable length: 8.5 m

Recommended optional accessories



Paper filter
Code 03979/1 ▲
- 07874 ■



Precleaner PCB ■
Code 021180



Carpet brush ■
Code 06386



WINDLY

COMPACT 429M IPC



WINDLY COMPACT 429M IPC - Accessories 38 mm diameter kit code 2672



Liquid suction brush
Code 06385



Flat cleaning head
Code 00003



Adapter
Code 06388



Narrow brush
Code 06295



Sanifilter
Code 03240 SAN



Head with anti foam system.



Ultra-shockproof plastic "Compact" tank, with high resistance to slightly acid substances. It's completely recyclable.



Built-in drain hose as standard for easy tank emptying.



Trolley with large wheels with tyres for greater manoeuvrability.



Handy carrying handle.

Technical characteristics

- Two two-stages By Pass motors
- Shockproof tank with resistance to slightly acid substances
- Suitable for the most intensive uses
- Suitable for big cleaning operations
- Professional vacuum cleaner
- Equipped with market handle



Market type handle for easier manoeuvring.

Model	Applications	Power (W)	Voltage (Volt)	Waterlift (mm/H ₂ O)	Air flow (m ³ /h)	Tank capacity (l)	Dimensions (LxWxH) (cm)
WINDLY COMPACT 429M IPC	Dry/Wet	2600	220/240	2470	420	60	97x63x52

Power cable length: 8.5 m

Recommended optional accessories



Precleaner PCB
Code 021200



Carpet brush
Code 06386



Stop filter disc
Code 02855



Paper cartridge filter
Code 02852



Fixed accessory for dust
Code 041
Fixed accessory for liquid
Code 042



WINDLY

429M IPC- 440M IPC



WINDLY 429M IPC - WINDLY 440M IPC - Accessories 38 mm diameter kit code 2672

06384 - LONG BRUSH FOR DUST
Standard accessory



Liquid suction brush
Code 06385



Flat cleaning head
Code 00003



Adapter
Code 06388



Narrow brush
Code 06295



Sanifilter
Code 03240 SAN



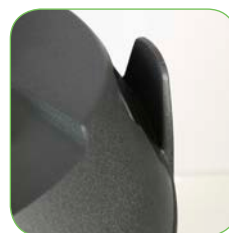
Head with anti foam system.



Handly carrying handle.



Recyclable shockproof polypropylene plastic.



Head with cable hook.



Shockproof polypropylene tank, resistant to water and easy to clean.

Technical characteristics

- Wet and dry vacuum cleaners of high performance
- Large capacity plastic tank (62 l)
- Particularly suitable for the most intensive uses
- Motors with double insulation
- WINDLY 429M IPC equipped with two two-stages By Pass motors
- WINDLY 440M IPC equipped with three two-stages By Pass motors
- Standard liquid drain device
- Equipped with market trolley

Model	Applications	Power (W)	Voltage (Volt)	Waterlift (mm/H ₂ O)	Air flow (m ³ /h)	Tank capacity (l)	Dimensions (LxWxH) (cm)
WINDLY 429/M IPC	Dry/Wet	2600	220/240	2380	400	62	56x70x92
WINDLY 440/M IPC	Dry/Wet	3600	220/240	2380	600	62	56x70x92

Power cable length: 8.5 m

Recommended optional accessories



Precleaner PCB
Code 021200



Carpet brush
Code 06386



Stop filter disc
Code 02855



Paper cartridge filter
Code 02852



Fixed accessory for dust
Code 041
Fixed accessory for liquid
Code 042



Paper filter
Code 2875



WINDLY

429M FM IPC - 429M INOX FM IPC



06389 - HANDGRIP
Standard accessory

00008 - FLEXIBLE HOSE (2,5 m)
Standard accessory

06387 - HOSES (NO. 2)
Standard accessory

06384 - LONG BRUSH FOR DUST
Standard accessory



Flowmix System

New generation high performance motors.
High efficiency and lower consumption.
Antibacterial filter "Sanifilter".

With Flowmix system the motors change from parallel to series connection, increasing waterlift performance by 60%.

06389 - HANDGRIP
Standard accessory

00008 - FLEXIBLE HOSE
(2,5 m)
Standard accessory

06387 - HOSES (NO. 2)
Standard accessory

06384 - LONG BRUSH FOR DUST
Standard accessory

WINDLY 429/M FM IPC - WINDLY 429/M FM INOX IPC - Accessories 38 mm diameter kit code 2672



Liquid suction brush
Code 06385



Flat cleaning head
Code 00003



Adapter
Code 06388



Narrow brush
Code 06295



Sanifilter
Code 03240 SAN

WINDLY 429M FM IPC - WINDLY 429M FM INOX IPC



Head with anti foam system.



Built-in drain hose as standard for easy tank emptying.



Handly carrying handle.



Trolley with large wheels with tyres for greater manoeuvrability.



Trolley with large rear wheels for more precise steering.

Technical characteristics

- With Flowmix system the motors change from parallel to series connection, increasing waterlift performance by 60%
- New generation high performance By Pass motors
- High efficiency and lower consumption
- Antibacterial filter "Sanifilter"

Flowmix System vs Traditional System



ASPIRATOR 2 MOTORS WITH FLOWMIX SYSTEM
Energy consumption 2,6 kW
Waterlift 3800 mm



ASPIRATOR 3 MOTORS
Energy consumption 3,5 kW
Waterlift 2380 mm

Model	Applications	Power (W)	Voltage (Volt)	Waterlift (mm/H ₂ O)	Air flow (m ³ /h)	Tank capacity (l)	Dimensions (LxWxH) (cm)
WINDLY 429M FM IPC	Dry/Wet	2600	220/240	Flowmix OFF: 2380 Flowmix ON: 3800	Flowmix OFF: 400 Flowmix ON: 220	62	52x74x93
WINDLY 429M FM INOX IPC	Dry/Wet	2600	220/240	Flowmix OFF: 2380 Flowmix ON: 3800	Flowmix OFF: 400 Flowmix ON: 220	62	52x74x93

Power cable length: 8.5 m

Recommended optional accessories



Paper filter
Code 02875



Precleaner PCB
Code 021200



Carpet brush
Code 06386



Stop filter disc
Code 02855



Fixed accessory for liquid
Code 042
Fixed accessory for dust
Code 041



Cartridge filter
Code 02850



Cartridge filter HEPA
Code 02995



Cartridge filter POLY
Code 06061



Vacuum cleaners Premium line

WINDLY

215S INOX IPC



WINDLY 215S INOX IPC - Accessories 36 mm diameter kit code 2675



Flat cleaning head
Code 00617



Narrow brush
Code 00004



Upholstery nozzle
Code 00616



Double use brush
Code 00632



Sanifilter
Code 03292 SAN



Head with anti foam system.



Trolley with swivelling wheels for easy manoeuvring.



Trolley with large rear wheels for more precise steering.



Robust steel tank.



With rear accessories trolley.

Technical characteristics

- Suitable for wet and dry vacuuming
- Equipped with new generation one-stage high speed motor
- Suitable for all uses
- Trolley for small surfaces
- Can be fitted with disposable paper filter
- Motors with double insulation

Model	Applications	Power (W)	Voltage (Volt)	Waterlift (mm/H ₂ O)	Air flow (m³/h)	Tank capacity (l)	Dimensions (LxWxH) (cm)
WINDLY 215S INOX IPC	Dry	1300	220/240	2380	200	17	40x40x50

Power cable length: 8.5 m

Recommended optional accessories



Paper filter
Code 00147



WINDLY

515 INOX IPC - 515/41 INOX IPC



WINDLY 515 INOX IPC - WINDLY 515/41 INOX IPC - Accessories 38 mm diameter kit code 2672



Liquid suction brush
Code 06385



Flat cleaning head
Code 00003



Adapter
Code 06388



Narrow brush
Code 06295



Sanifilter
Code 03292 SAN

WINDLY 515 INOX IPC - WINDLY 515/41 INOX IPC



Head with anti foam system.



Robust steel tank.



Trolley with large rear wheels for more precise steering.



Recyclable shockproof polypropylene plastic.



Handly carrying handle.

Technical characteristics

- Suitable for wet and dry vacuuming
- Equipped with new generation one-stage high speed By Pass motor
- Suitable for all uses
- Trolley for medium surfaces
- Can be fitted with disposable paper filter
- Motors with double insulation
- Liquid tank of medium capacity



Trolley with swivelling wheels for easy manoeuvring.

Model	Applications	Power (W)	Voltage (Volt)	Waterlift (mm/H ₂ O)	Air flow (m ³ /h)	Tank capacity (l)	Dimensions (LxWxH) (cm)
WINDLY 515 INOX IPC	Dry/Wet	1300	220/240	2380	200	33	40x40x60
WINDLY 515/41 INOX IPC	Dry/Wet	1300	220/240	2380	200	41	40x40x90

Power cable length: 8.5 m

Recommended optional accessories



Paper filter
Code 03979/1 ▲
- 07874 ■



Precleaner PCB
Code 021180



Carpet brush
Code 06386



WINDLY

429M INOX IPC - 440M INOX IPC



WINDLY 429M INOX IPC - WINDLY 440M INOX IPC - Accessories 38 mm diameter kit code 2672



Liquid suction brush
Code 06385



Flat cleaning head
Code 00003



Adapter
Code 06388



Narrow brush
Code 06295



Sanifilter
Code 03240 SAN

WINDLY 429M INOX IPC - WINDLY 440M INOX IPC



Head with anti foam system.



Handly carrying handle.



Fitted with steel tank with side handles to facilitate emptying.



Built-in drain hose as standard for easy tank emptying.



Trolley with large rear wheels for more precise steering.

Technical characteristics

- Wet and dry vacuum cleaners of high performance
- Large capacity steel tank (62 l)
- Particularly suitable for the most intensive uses
- Motors with double insulation
- WINDLY 429M IPC equipped with two two-stages By Pass motors
- WINDLY 440M IPC equipped with three two-stages By Pass motors
- Standard liquid drain device
- Equipped with market trolley

Model	Applications	Power (W)	Voltage (Volt)	Waterlift (mm/H ₂ O)	Air flow (m ³ /h)	Tank capacity (l)	Dimensions (LxWxH) (cm)
WINDLY 429M INOX IPC	Dry/Wet	2600	220/240	2380	400	62	56x70x92
WINDLY 440M INOX IPC	Dry/Wet	3600	220/240	2380	600	62	56x70x92

Power cable length: 8.5 m

Recommended optional accessories



Paper filter
Code 02875



Precleaner PCB
Code 021200



Carpet brush
Code 06386



Stop filter disc
Code 02855



Fixed accessory for liquid
Code 042
Fixed accessory for dust
Code 041



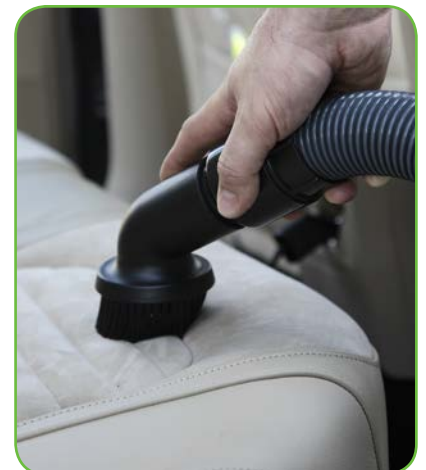
Cartridge filter
Code 02850



Cartridge filter HEPA
Code 02995



Cartridge filter POLY
Code 06061



DELTA

200 IPC - 300 IPC



DELTA 200 IPC - DELTA 300 IPC - Accessories 36 mm diameter kit code 6094G



Double use brush ▲
Code 00632/B



Narrow brush ▲
Code 00004



Upholstery nozzle ▲
Code 00616



Sanifilter ▲
Code 03293 SAN



Flat cleaning head ▲
Code 00617



Clean water bucket ▲
Code 02638



Suction head for sofas
Code 06174 ▲
- 00752/OTT ■



Particularly suitable for cleaning fabrics and carpet.



Head with anti foam system.



Extractable plastic detergent tank for rapid filling and easy cleaning.



Recyclable shockproof polypropylene plastic.



Head with cable hook.

Technical characteristics

- Professional extractors for small and medium cleaning operations
- Solution injection and extraction
- Vacuum head with two-stage By Pass motor and electromagnetic self-priming double-membrane injection pump
- Waterproof self-ventilating motor
- 48 W pump
- DELTA 200 IPC equipped with plastic tank
- DELTA 300 IPC equipped with stainless steel tank



Trolley with four swivelling wheels for easy manoeuvring.

Model	Applications	Power (W)	Voltage (Volt)	Waterlift (mm/H ₂ O)	Air flow (m ³ /h)	Tank capacity (l)	Dimensions (LxWxH) (cm)
DELTA 200 IPC	Dry/Wet	1200	220/240	2470	210	22	42x53x59
DELTA 300 IPC	Wet	1200	220/240	2470	210	32	52x43x80

Power cable length: 8.5 m

Recommended optional accessories



Double use brush
Code 00632/B



Narrow brush
Code 00004



Upholstery nozzle
Code 00616



Flat cleaning head
Code 00617



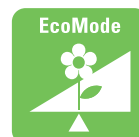
Sanifilter
Code 03293 SAN



Extractors Premium line

DELTA

700 IPC



AUTOMOTIVE



02551/OTT - FLEXIBLE HOSE (2,5 m)
Standard accessory

06407 - NOZZLE FOR FLOORS AND CARPET 2 NOZZLES
Standard accessory

DELTA 700 IPC - Accessories 36 mm diameter kit code 2672



Detergent injection and extraction. Particularly suitable for cleaning car interiors.



The machine is equipped with external tank for clean water filling.



Built-in drain hose as standard for easy tank emptying.



Head with anti foam system.



AISI 304 stainless steel tank.

Technical characteristics

- Two motors with double insulation
- Motors can be used separately
- 90 W membrane By Pass injection pump for the most intensive working operations
- Professional two-motors extractor for the most intensive washing and drying of all surfaces, except wood.



Racyclable shockproof polypropylene plastic.

Model	Applications	Power (W)	Voltage (Volt)	Waterlift (mm H ₂ O)	Air flow (m ³ /h)	Tank capacity (l)	Dimensions (LxWxH) (cm)
DELTA 700 IPC	Dry/Wet	2400	220/240	2470	420	60	74x58x93

Power cable length: 8.5 m

Recommended optional accessories



Suction head for sofas
Code 00752/OTT



Floor nozzle with
1 nozzle
Code R2600



Floor nozzle with
4 nozzles
Code R2700



Vacuum cleaners Professional line

The IPC Professional line of wet and dry vacuum cleaners are designed to offer high performance and a long working life, even for less tough uses, to offer a complete range for all applications. The high-quality tough plastics, latest generation one-stage suction motor and complete range of accessories make these machines an indispensable professional tool.





YES PLAY 202 SMALL IPC page 36



Sectors	
Automotive	○ ○ ○ ○ ○ ○ ○ ○
Industry	○ ○ ○ ○ ○ ○ ○ ○
Cleaning	● ● ● ● ○ ○ ○ ○
Agriculture	○ ○ ○ ○ ○ ○ ○ ○
Ironmongery	● ● ● ● ● ● ● ●
Daily use	
	h 0 8



DRY

YES PLAY 215 IPC page 38



Sectors	
Automotive	● ● ● ● ○ ○ ○ ○
Industry	○ ○ ○ ○ ○ ○ ○ ○
Cleaning	● ● ● ● ● ● ● ●
Agriculture	● ● ○ ○ ○ ○ ○ ○
Ironmongery	● ● ● ● ● ● ● ●
Daily use	
	h 0 8



WET/ DRY

YES PLAY 515 IPC page 38



Sectors	
Automotive	● ● ● ● ○ ○ ○ ○
Industry	● ● ● ● ○ ○ ○ ○
Cleaning	● ● ● ● ● ● ● ●
Agriculture	● ● ● ● ○ ○ ○ ○
Ironmongery	● ● ● ● ● ● ● ●
Daily use	
	h 0 8



WET/ DRY

YES PLAY 429M IPC page 40



Sectors	
Automotive	● ● ● ● ● ● ● ●
Industry	● ● ● ● ○ ○ ○ ○
Cleaning	● ● ● ● ● ● ● ●
Agriculture	● ● ● ● ○ ○ ○ ○
Ironmongery	● ● ● ● ● ● ● ●
Daily use	
	h 0 8



WET/ DRY

YES PLAY 440M IPC page 40



Sectors	
Automotive	● ● ● ● ● ● ● ●
Industry	● ● ● ● ○ ○ ○ ○
Cleaning	● ● ● ● ● ● ● ●
Agriculture	● ● ● ● ○ ○ ○ ○
Ironmongery	● ● ● ● ● ● ● ●
Daily use	
	h 0 8



WET/ DRY

YES PLAY

202 SMALL IPC



YES PLAY 202 SMALL IPC - Accessories 36 mm diameter kit code 2671



Flat cleaning head
Code 00617



Upholstery nozzle
Code 00616



Narrow brush
Code 00004



Sanifilter
Code 03833 SAN



Shockproof polypropylene tank, resistant to wear and easy to clean.



Completely recyclable high resistance polypropylene plastics.



Handy carrying handle.



Head with cable hook.



Equipped with four swivelling wheels for easy manoeuvring.

Technical characteristics

- Suitable for dry vacuuming
- Small, easy to use without trolley
- Extremely silent
- Can be fitted with disposable paper filter

Model	Applications	Power (W)	Voltage (Volt)	Waterlift (mm/H ₂ O)	Air flow (m³/h)	Tank capacity (l)	Dimensions (LxWxH) (cm)
YES PLAY 202 SMALL IPC	Dry	1300	220/240	2870	210	16	39x39x63

Power cable length: 8.5 m

Recommended optional accessories



Paper filter
Code 00147



YES PLAY

215 IPC - 515 IPC



06158 - HANDGRIP
Standard accessory

06240 - HOSES
(NO. 2)
Standard accessory

01685 - FLEXIBLE HOSE
(2 m)
Standard accessory

06240 - HOSES (NO. 2)
Standard accessory

LAFN85073 - HANDGRIP
Standard accessory

01685- FLEXIBLE
HOSE (2 m)
Standard accessory

02720 - LIQUID SUCTION BRUSH
Standard accessory

SPPV28245 - LIQUID SUCTION BRUSH
Standard accessory

YES PLAY 215 IPC - YES PLAY 515 IPC - Accessories 36 mm diameter kit code 2675



Flat cleaning head
Code 00617



Upholstery nozzle
Code 00616



Narrow brush
Code 00004



Double use brush
Code 00632



Sanifilter
Code 03292 SAN

YES PLAY 215 IPC - YES PLAY 515 IPC



Head with anti foam system.



Shockproof polypropylene tank, resistant to wear and easy to clean.



Completely recyclable high resistance polypropylene plastics.



Handy carrying handle.



Trolley with four swivelling wheels for easy manoeuvring.

Technical characteristics

- Suitable for vacuuming dust and moderately corrosive liquids
- Equipped with high speed single-stage motor
- Small with capacity of 17 litres (model YES PLAY 215 IPC) and 27 litres (model YES PLAY 515 IPC)
- Can be fitted with disposable paper filter
- Extremely versatile and easy-to-use

Model	Applications	Power (W)	Voltage (Volt)	Waterlift (mm/H ₂ O)	Air flow (m ³ /h)	Tank capacity (l)	Dimensions (LxWxH) (cm)
YES PLAY 215 IPC	Dry/Wet	1500	220/240	2230	255	17	39x39x63
YES PLAY 515 IPC	Dry/Wet	1500	220/240	2230	255	27	39x39x72

Power cable length: 8.5 m

Recommended optional accessories



Paper filter
Code 02741 ▲
- 03979-1 ■



YES PLAY

429M IPC - 440M IPC



YES PLAY 429M IPC - YES PLAY 440M IPC - Accessories 38 mm diameter kit code 2672



Liquid suction brush
Code 06385



Flat cleaning head
Code 00006



Adapter
Code 06388



Narrow brush
Code 06295



Sanifilter
Code 03240 SAN



Head with anti foam system.



Built-in drain hose as standard for easy tank emptying (model).



Equipped with market type trolley with two large rear wheels for easy manoeuvring.



Completely recyclable high resistance polypropylene plastics.



Trolley with market type handle for easy manoeuvring.

Technical characteristics

- Suitable for wet and dry vacuuming
- Equipped with two one-stage By Pass suction motors
- Top performance
- Suitable for the most intensive uses
- Excellent power for especially demanding working operations



Trolley with four swivelling wheels for easy manoeuvring.

Model	Applications	Power (W)	Voltage (Volt)	Waterlift (mm/H ₂ O)	Air flow (m ³ /h)	Tank capacity (l)	Dimensions (LxWxH) (cm)
YES PLAY 429M IPC	Dry/Wet	2800	220/240	2230	510	62	74x58x93
YES PLAY 440M IPC	Dry/Wet	3500	220/240	2230	765	62	74x58x93

Power cable length: 8.5 m

Recommended optional accessories



Paper filter
Code 02875



Vacuum cleaners for Special Applications

The IPC range of vacuum cleaners also includes a range of specific professional cleaners for special applications requiring specifically designed products to clean environments where the working conditions are particularly difficult or intensive.





LEO - LEO MAXI page 44



Special applications

- ✓ Very low noise levels
- ✓ Perfect for cleaning hotels, shops and offices

Daily use

h 0 8



HOTELS AND SHOPS

MARKET SUB page 46



Special applications

- ✓ Equipped with submerged pump to allow the tank to be emptied during vacuuming operations
- ✓ Pump can be removed in order to make it a traditional vacuum cleaner

Utilizzo giornaliero

h 0 8



FLOODS AND EMPTYING LIQUIDS

VOLCAN page 48



Special applications

- ✓ Cleaning ovens and hot residues up to a temperature of 120° (no ash)
- ✓ Equipped with hose resistant to high temperatures

Daily use

h 0 8



DUST AND HOT RESIDUES UP TO 120°

PULSAR 429/H page 50



Special applications

- ✓ H certificate
- ✓ Suitable for vacuuming carcinogenic or pathogenic dust, such as asbestos dust

Daily use

h 0 8



TOXIC-HAZARDOUS SUBSTANCES

ECOSPITAL page 52



Special applications

- ✓ Certification for electromedical field according to IEC/EN 60601-1 standard
- ✓ Made in antibacterial plastic, suitable for cleanrooms and hospitals

Daily use

h 0 8



CLEANROOMS AND HOSPITALS

MAXIBAG page 54

Special applications

- ✓ Suitable for dust collection
- ✓ Provided with a 20 m long LONGOPAC® collection system allowing the operator to easily and continuously store the vacuumed material in bags.

Daily use

LEO - LEO MAXI

**HOTELS AND
SHOPS**



No Noise



Flex



PowerHose



PowerScrew

Special Applications

- ✓ Very low noise levels
- ✓ Perfect for cleaning hotels, shops and offices



06152 G52 - HANDGRIP
Standard accessory

06240 G52 - HOSES
(NO. 2)
Standard accessory

07993 G-G52 - FLEXIBLE
HOSE (2 m)
Standard accessory

0632T G52 - DOUBLE USE BRUSH
Standard accessory

LEO - LEO MAXI - Accessories 36 mm diameter kit code 07992G52



Upholstery nozzle
Code 00616 G52



Narrow brush
Code 00004 G52



Flat cleaning head
Code 00617 G52



Accessories holder
Code 07814 G65



Useful standard accessories holder (code 07814 G65).



Easy to wind power cable (8.5 m).



No-noise tyres on wheels.



Completely recyclable high resistance polypropylene plastics.



Equipped with cartridge filter and paper filter.

Technical characteristics

- Low noise and high performance
- Particularly suitable for hotels requiring maximum manoeuvrability, no noise and a compact size



Protected waterproof rubber ON button.

Model	Applications	Power (W)	Voltage (Volt)	Waterlift (mm/H ₂ O)	Air flow (m ³ /h)	Tank capacity (l)	Dimensions (LxWxH) (cm)
LEO	Dry	1300	220/240	2870	210	12,5	35x40x32
LEO MAXI	Dry	1300	220/240	2870	210	12,5	44x40x51

Power cable length: 8.5 m

Recommended optional accessories



Telescopic steel hose
Code 00028



Paper filter
Code 020862



Vacuum cleaners for special applications

MARKET SUB



No Noise



Flex



PowerGasket



PowerHose



EcoMode

FLOODS AND
EMPTYING LIQUIDS

06389 - HANDGRIP
Standard accessory

06387 - HOSES (NO. 2)
Standard accessory

06385 - LIQUID SUCTION BRUSH
Standard accessory

Special Applications

- ✓ Equipped with submerged pump to empty tank during wet vacuuming
- ✓ Pump can be removed in order to make the MARKET SUB a traditional vacuum cleaner

00008 - FLEXIBLE HOSE (2,5 m)
Standard accessory

MARKET SUB - Accessories 38 mm diameter kit code 1327



Submerged pump to allow the tank to be emptied during vacuuming operations.



Ultra-shockproof plastic "Compact" tank, with high resistance to slightly acid substances.



Market type handle for easier manoeuvring.



Head with cable hook.



Concealed power cable.



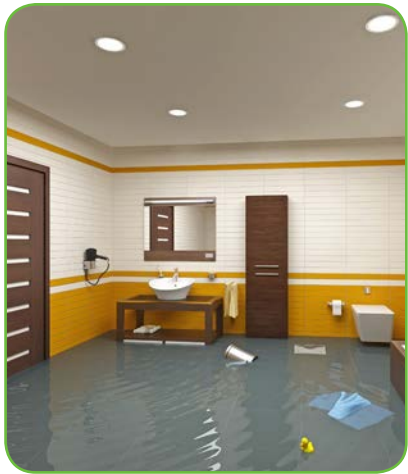
Large rear wheel for easy manoeuvring.

Technical characteristics

- Wet vacuum cleaner with two two-stage motors
- Equipped with extremely resistant plastic tank to vacuum slightly acid liquids
- Submerged pump with float for start up and shut off placed inside the liquid collection tank. Once vacuuming has begun, the tank fills with liquid and the submerged pump automatically drains it into the external sump pit
- Pump also suitable for water with high specific weight, but not for draining oily substances
- Suitable for emptying sumps, flooded areas and for vacuuming dirty liquids

Model	Applications	Power (W)	Voltage (Volt)	Waterlift (mm/H ₂ O)	Air flow (m³/h)	Tank capacity (l)	Dimensions (LxWxH) (cm)
MARKET SUB	Dry/Wet	2400	220/240	2470	420	62	52x63x95

Power cable length: 8.5 m



Vacuum cleaners for special applications

VOLCAN



**DUST AND HOT
RESIDUES UP TO 120° C**

03008/60 ALL -
ALUMINIUM OVEN KIT
(3 m)
Standard accessory

00562 - HOSE FOR OVEN
Standard accessory

Applications Speciali

- ✓ Cleaning ovens and hot residues up to a temperature of 120° (no ash)
- ✓ Equipped with hose resistant to high temperatures

00569 - OVEN BRUSH
Standard accessory

VOLCAN - Accessories 38 mm diameter



Heat-resistant filter
Code 02860 X551



Head with self-extinguishing plastic base.



Special heat resistant filter in meta-aramid fabric resistant to high temperatures.



Equipped with aluminium union to guarantee conductivity and discharge of static electricity.



Antistatic 60/40 hose with aluminium sleeve resistant to high temperatures.



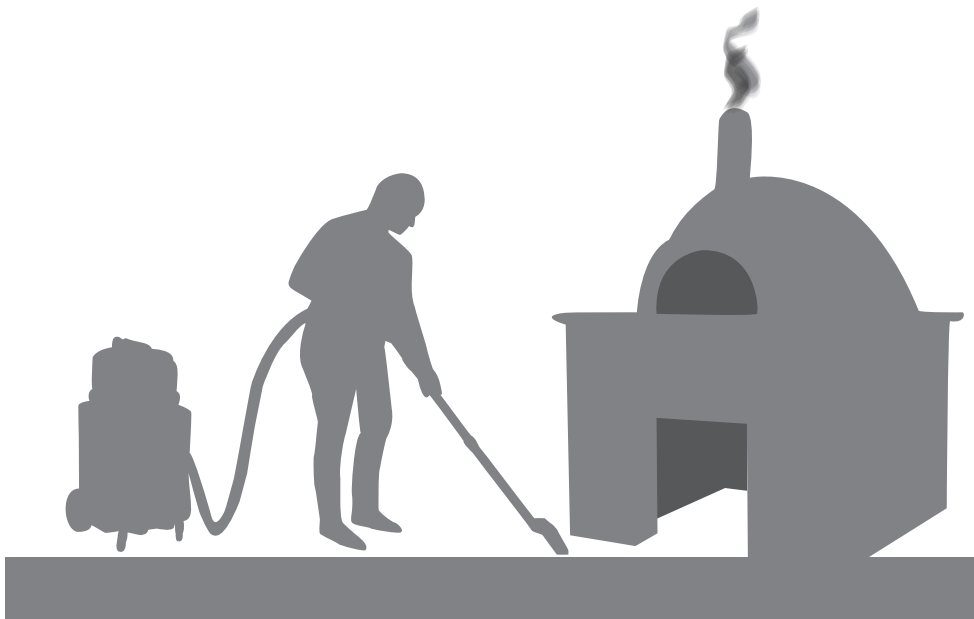
Equipped with four swivelling wheels for easy manoeuvring.

Technical characteristics

- Two-stage industrial motor with metal flange
- Designed for vacuuming hot residues fro heaters, boiler flues, ovens, etc. up to a maximum temperature of 120 °
- Metal tank for discharging static electricity to earth (with special electrically conducting kit) and heatproof filter
- Filters and hoses resistant to high temperatures

Model	Applications	Power (W)	Voltage (Volt)	Waterlift (mm/H ₂ O)	Air flow (m³/h)	Tank capacity (l)	Dimensions (LxWxH) (cm)
VOLCAN	Dry	1600	220/240	2795	210	41	39x39x90

Power cable length: 8.5 m



Vacuum cleaners for special applications

PULSAR

429/H



**TOXIC-HAZARDOUS
SUBSTANCES**

06389 - HANDGRIP
Standard accessory

DRY

Special applications

- ✓ H certificate
- ✓ Suitable for vacuuming carcinogenic or pathogenic dust, such as asbestos dust

06387 - HOSES
(NO. 2)
Standard accessory

00008 - FLEXIBLE HOSE (2,5 m)
Standard accessory

06384 - LONG BRUSH FOR DUST
Standard accessory

PULSAR 429/H - Accessories 38 mm diameter kit code 2672 DRY



Flat cleaning head
Code 00003



Narrow brush
Code 06295



Adapter
Code 06388



Equipped with standard HEPA cartridge fixed to the head with a special metal clip (code 07768).



Optional two-ply paper bag with closure to avoid dispersion of the dust during emptying (code 02875/M).



Filter with full bag light.



Head with cable hook.



Trolley with large-diameter swivelling wheels with tyres for easy manoeuvring.

Technical characteristics

- Two two-stages motors
- Designed specifically to vacuum toxic and hazardous substances
- TUV certificate
- Guarantees reduction of the particles which, with a normal vacuum cleaner, would be dispersed in the environment with consequent damage to the health
- Use category H (high risk) to separate all dust with all exposure limit

values according to the volume occupied, including carcinogenic and pathogenic dust

- The standard fabric filter (code 20368) or the optional disposable two-ply paper filter (code 02875/M) must always be fitted in the tank. They act as rough filter to avoid the cartridge filter under the head from clogging rapidly with dust. For cleaning operations with dangerous materials, it is advised the use of the fabric filter (code 20368)

Model	Applications	Power (W)	Voltage (Volt)	Waterlift (mm/H ₂ O)	Air flow (m ³ /h)	Tank capacity (l)	Dimensions (LxWxH) (cm)
PULSAR 429/H	Dry	2400	220/240	2495	430	62	52x52x96

Power cable length: 8.5 m



H (high risk) to separate all dust with all exposure limit values according to the volume occupied, including carcinogenic and pathogenic dust.



Vacuum cleaners for special applications

ECOSPITAL



**CLEANROOMS
AND HOSPITALS**



06158VHA - HANDGRIP
Standard accessory

06240BHA - HOSES
(NO. 2)
Standard accessory

Special applications

- ✓ Certification for electromedical field according to IEC/EN 60601-1 standard
- ✓ Made in antibacterial plastic, suitable for cleanrooms and hospitals

01685VHA - FLEXIBLE HOSE
(4.5 m)
Standard accessory

06210H - LONG BRUSH FOR DUST
Standard accessory

ECOSPITAL - Accessories 36 mm diameter



Narrow brush
Code 00004



Flat cleaning head
Code 00617



Upholstery nozzle
Code 00616



Four filtration levels.



Tank in antibacterial plastic.



Head with cable hook.



With rear accessories trolley.



Trolley with large rear wheels for more precise steering.

Technical characteristics

- Vacuum cleaner made of antibacterial plastic inhibiting the development and proliferation of bacteria
- 4 filtration levels: paper bag, Sanifilter, Hepa filter before and after the motor
- Suitable to work in environments where hygiene is absolutely necessary as it retains 98% of bacteria
- Low noise 72 dB
- Use category H (high risk) to separate all dust with all exposure limit values according to the volume occupied, including carcinogenic and pathogenic dust

Certification for electromedical field according to IEC/EN 60601-1 standard



H (high risk) to separate all dust with all exposure limit values according to the volume occupied, including carcinogenic and pathogenic dust.

Model	Applications	Power (W)	Voltage (Volt)	Waterlift (mm/H ₂ O)	Air flow (m ³ /h)	Tank capacity (l)	Dimensions (LxWxH) (cm)
ECOSPITAL	Dry	1100-1300 max	220/240	2870	210	27	39x39x72

Power cable length: 8.5 m

Sanifilter treatment

Possibility of inhibiting and eliminating:



Viruses



Bacteria



Fungi: yeast and moulds



Micro-parasites



Note

Note



IPC

IPC Integrated Professional Cleaning

IP Cleaning S.p.A.

Viale Treviso, 63 - 30026 Summaga di Potogruaro - VENEZIA - ITALY

Tel. ++39 0421 205511 (r.a.) - Fax ++39 0421 204227

www.ipcleaning.com - info@ipcleaning.com



IPC Soteco

IPC Integrated Professional Cleaning

Manufacturing and commercial premises

IPC Soteco

Via E. Fermi, 2 - 26022 Castelveverde - CREMONA - ITALY

Tel. ++39 0372 424611 - Fax ++39 0372 429398

www.ipcsoteco.com - exp@soteco.com - ita@soteco.com